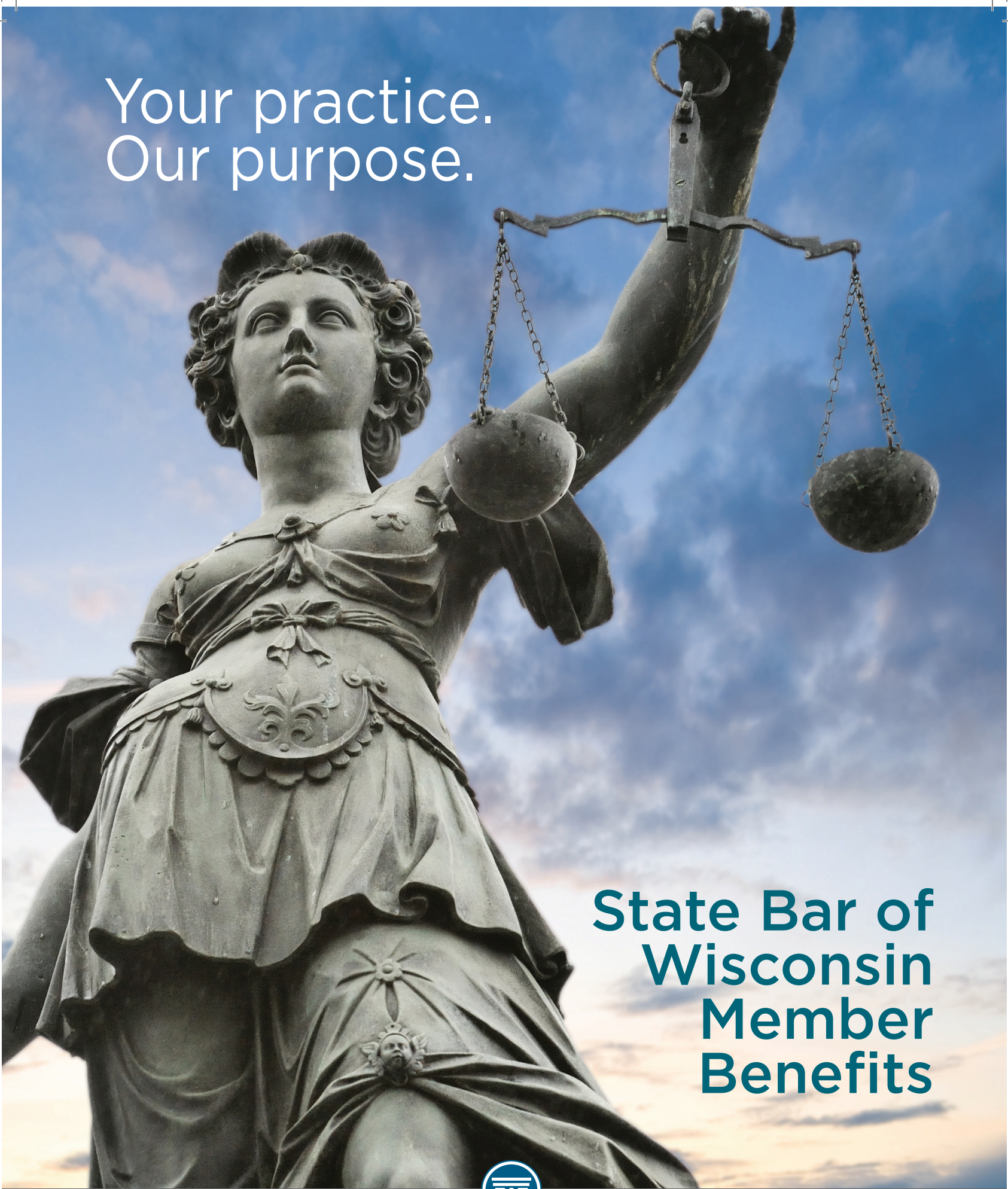


Your practice.
Our purpose.



**State Bar of
Wisconsin
Member
Benefits**



STATE BAR OF WISCONSIN



Your practice. Our purpose.

Every day, you face diverse and unique challenges in the practice of law. And every day, your State Bar is ready to provide the resources, information, and insights you need to turn those challenges into opportunities, questions into answers, delay into determined action. Simply put, we're here to help you succeed.

Vision of the State Bar of Wisconsin

Our members are the respected guardians of the dignity and integrity of the rule of law within a fair and accessible justice system.

Mission of the State Bar of Wisconsin

We support our members in a dynamic and diverse society in delivering valued professional services, promoting access to justice, and pursuing professional satisfaction.



STATE BAR OF WISCONSIN

Discover the Benefits of Membership

As a member of the State Bar of Wisconsin, you have an extensive system of support at your fingertips. Your membership grants you access to hundreds of relevant and helpful services, resources, products and educational offerings, as well as networking and leadership opportunities — all included with your membership or significantly discounted for members.

Your support begins with these exclusive member benefits. The offerings in this guide represent hundreds of tools and resources, specifically designed to promote the success of your practice, the enrichment of your career, and the quality of your personal and professional life.

We're At Your Service

This guide is only the beginning of our support for you. We're happy to respond to your needs and provide solutions to help you do what you do best. If you have specific questions, concerns, or requests, contact us at (800) 728-7788 or via service@wisbar.org.

Come and explore the many benefits of your State Bar membership!

Continuing Legal Education	4-6
Practice Tools	7-8
Legal Research Resources.....	9-10
News and Trends	11-12
Practice Management.....	13-14
wisbar.org.....	15-17
Lawyer Assistance & Legal Communities	18-19
Leadership Opportunities.....	20
Public Service Opportunities	21-22
Discount Programs.....	23-28

Continuing Legal Education

Law is a dynamic field with an ever increasing and evolving knowledge base to understand and apply. Whether you're concerned with gaining legal insights or obtaining CLE credits, our educational resources are always up to the task and available in a variety of learning formats.

Earning CLE is a cinch with sessions on a wide variety of timely and relevant topics. State Bar of Wisconsin PINNACLE® brings you Wisconsin's best seminar selection at the best value. Choose the seminar format you prefer, and as a State Bar of Wisconsin member, you get discounted tuition on all PINNACLE seminars!

PINNACLE CLE Seminars

State Bar of Wisconsin PINNACLE is the largest provider of continuing legal education in the state. With an emphasis on providing current, relevant, and practical legal information in a convenient manner, PINNACLE is dedicated to meeting the needs of Wisconsin practitioners for continuing education in the information age. PINNACLE seminars are available in a variety of formats:

- Live programs
- Live webcasts
- Webcast replays
- Telephone seminars
- Web audio



Attend the live or webcast version of a seminar and receive free access to the webcast recording for 90 days. Review the webcast as many times as you like to gather tidbits you may have missed the first time through.



CLE OnDemand

Get CLE wherever and whenever you want — 24/7. View select PINNACLE CLE OnDemand programs to fulfill up to 15 CLE credits each reporting period. Note that EPR credits cannot be earned via CLE OnDemand.

Conferences and Institutes

Institutes and conferences include plenary speakers, multiple breakout sessions, networking and social events, and may include an expo area. They offer specialized, in-depth educational programming focused on select practice areas.

Annual Meeting & Conference

The Annual Meeting & Conference is the highlight of the year for many State Bar of Wisconsin members. It's packed with receptions, celebrations, and luncheons for networking and socializing. Plus, you can earn CLE credits from sessions featuring nationally-acclaimed presenters. If you want to mingle with the movers and shakers in Wisconsin's legal profession, don't miss the Annual Meeting & Conference.



Health, Labor, and Employment Law Institute



Featuring educational sessions led by renowned presenters, the Health, Labor, and Employment Law Institute focuses on the current issues and latest developments in these practice areas. It brings together influential judges, lawyers, legal staff, and other professionals for learning and networking.

Wisconsin Solo & Small Firm Conference

Designed to meet the unique needs of solo and small firm practitioners, the Wisconsin Solo & Small Firm Conference brings together the broad-spectrum educational sessions and networking events these lawyers need to succeed. As one of our most popular annual events, it's an unmatched opportunity for you to learn, network, and have a little fun.



Course materials

Unable to attend a PINNACLE® seminar, but want the knowledge? Purchase an audio CD of many of our seminar programs and/or a printed course manual at an affordable price. (Not available for credit.) Ultimate Pass™ holders can access these same materials at no additional cost as soon as they are available through CLE OnDemand™. Find more information at wisbar.org/seminars/coursematerials.

Section & Division CLE

For additional opportunities to advance your legal knowledge, check into CLE programs from State Bar of Wisconsin sections and divisions. Visit wisbar.org/sections or wisbar.org/divisions for more information.

Continued on next page

Save Money on CLE with State Bar Options

Ultimate Pass Gold

The Ultimate Pass Gold gives you unlimited access to PINNACLE CLE and events for one full year, including:

- Live, webcast, telephone, and CLE OnDemand seminars
- Annual Meeting & Conference
- Wisconsin Solo & Small Firm Conference
- Health, Labor, and Employment Law Institute

Plus, get unlimited access to all seminar course materials. It's the perfect way to explore new practice areas. Ultimate Pass Gold provides all of these benefits for one easy-to-budget annual fee.



Ultimate Pass Silver

The Ultimate Pass Silver gives you unlimited access for one year to live, webcast, telephone, and OnDemand PINNACLE CLE seminars, plus 50% off tuition to:

- Annual Meeting & Conference
- Wisconsin Solo & Small Firm Conference
- Health, Labor, and Employment Law Institute

Ultimate Pass Corporate

Have more than one attorney in your firm? The Ultimate Pass Corporate option allows firms to enjoy all the benefits of Ultimate Pass Gold at a lower per attorney price. It puts a predictable cap on continuing legal education costs, and it makes receipt-tracking and reimbursements for CLE a thing of the past. It also helps firms expand into new areas of practice – without spending more on CLE.

Passbook Certificates

Control your CLE costs with specially priced Passbook Certificates. Certificates are good for all PINNACLE and CLE OnDemand seminars, and are a great, flexible option for firms.

- Each Passbook Certificate is good for one PINNACLE or CLE OnDemand seminar
- Available in books of three or ten
- Good for two years from the date of purchase
- Fully transferable – can be used by anyone in your organization



ULTIMATE PASS

EASY TO BUDGET

With one annual fee, you'll always know your CLE costs.

BIG SAVINGS

Purchase an Ultimate Pass and save hundreds annually on CLE.

CONVENIENT

Fit education into your schedule on your terms. Attend a live seminar, catch a webcast replay, or choose an OnDemand recording.

KEEP UP-TO-DATE

Stay current on the latest developments in your key practice areas, or expand your offerings by learning a new area of practice.

Convenient Payment Plan Options

The State Bar offers convenient payment plans on several of its annual subscription products, including Ultimate Pass Gold, Ultimate Pass Silver, Books UnBound, and the complete Fillable Forms Library.

Practice Tools

Be prepared for whatever legal challenge comes your way and save yourself hours of research time with PINNACLE books and products. Written and reviewed by attorneys, this comprehensive library of treatises, system books, codebooks, forms, and other publications is available in print and electronically.



Books

From arbitration to worker's compensation and everything in between, PINNACLE books deliver content Wisconsin attorneys have trusted and relied on for decades. Many titles include access to electronic forms. Update your legal library with books covering such topics as:

- Appellate practice
- Business organization and litigation
- Civil litigation and torts
- Creditor/Debtor
- Criminal law
- Elder
- Employment law
- Estate planning and probate
- Family law and divorce
- General practice
- Guardian ad litem
- Real Estate
- Traffic
- And more

Stay Current with Automatic Supplementation

Ensure your PINNACLE books are always up-to-date. Subscribe to our automatic supplementation service to save on costs and practice with confidence.

Books UnBound®

This subscription-based online library makes legal research more efficient and economical. Books UnBound offers PINNACLE book titles in an easy-to-use electronic format. These digital books contain links to federal and state statutes and case law through Fastcase® for no additional fee.

Key features include:

- Use anywhere you have an internet connection
- User-friendly interface
- Google-powered search results
- Free access to supplements, forms, and checklists
- Free access for support staff
- Links to news and events
- Optimized for smartphone and tablet access
- Client billing timer for tracking time spent researching
- Ability to search the entire Books UnBound library
- Option to add bookmarks and personal notes to book sections



Continued on next page

Forms

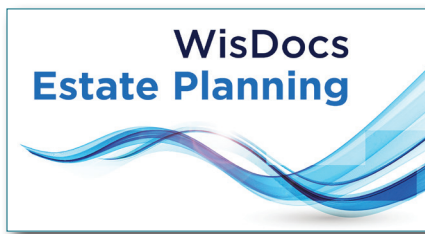
Finish paperwork in a flash with our online Fillable Forms Bank. Access more than 1,300 forms and documents from affidavits to summonses. Easily modify any form to fit your needs. Every form is reviewed and updated regularly to ensure it complies with all required statutory specifications. The Fillable Forms Bank is organized into eight practice-specific sections, including:

Fillable Forms Bank

- Appellate Practice
- Business Law
- Civil Litigation
- Criminal Law
- Elder Law
- Estate Planning/Probate
- Family Law
- Real Estate

You can also subscribe to the entire library. *Payment plans are available for full library subscriptions.*

WisDocs Estate Planning Document Assembly Program



WisDocs Estate Planning is the State Bar of Wisconsin's estate planning document assembly system. Simply select the form you wish to create, and a dynamic, guided interview tool asks you for all the needed information. Once the interview is completed, one click assembles the required provisions and fills in the provided answers. It's compiled from dozens of forms and sample-language provisions from the award-winning *Eckhardt's Workbook for Wisconsin Estate Planners*, allowing you to create:

- Wills
- Revocable trusts
- Marital property agreements
- Durable powers of attorney
- Advance care planning
- And more

ABA Books Discount - Save 15% on ABA Publications

Looking for a great way to augment your Wisconsin law resource library? Choose from hundreds of ABA titles (no ABA membership required). To take advantage of these savings, enter **PAB8EWIB** in the "**Discount Code Number**" field when placing your order on the ABA Web site.

Legal Research Resources

From people, to places, to things, find what you need fast with the outstanding research tools and resources available to State Bar members.

Fastcase®



Experience the power and ease of Fastcase, the next-generation online legal research system. Your membership entitles you to unlimited access to a comprehensive 50-state and federal case law database.

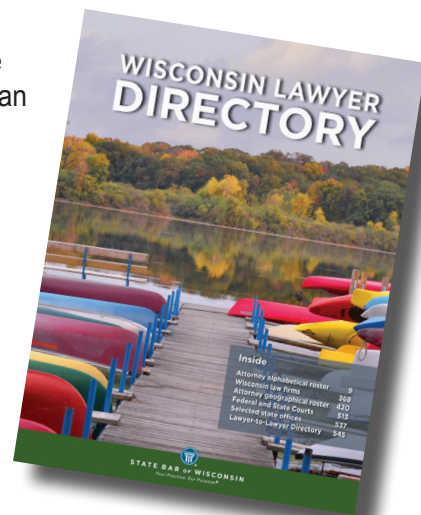
Access Fastcase through the Legal Research page on wisbar.org. You can find free online demonstrations and answers to frequently asked questions at fastcase.com/support.

- **Search your way.** Whether you want to search using natural language, keywords, or look up a citation, Fastcase gives you options.
- **Filter your search results by jurisdiction.** Narrow the number of cases you see by running a search and then choosing a jurisdiction filter option.
- **Seminal cases are included.** Thanks to a Fastcase tool called Forecite, when you perform a keyword search on Fastcase, Forecite goes the extra mile and identifies seminal cases that can be easily missed by ordinary keyword searches.
- **Citations are simple.** Just highlight the appropriate text, click “Copy Citation,” and get a Bluebook friendly cite.

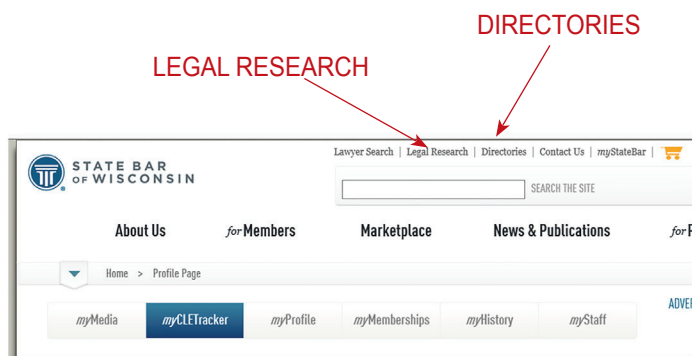
Directories

If you need to find a person, resource, or rule having to do with the practice of law in Wisconsin, the **Directories** page on wisbar.org can help you find it. The Directories page includes:

- Wisconsin Circuit Court Rules
- Court Directory
- Lawyer Search
- *Lawyer-to-Lawyer Directory*
- *Wisconsin Lawyer Directory*
- State Bar Leadership and Staff Directories
- Wisconsin Law-related Organizations and Agencies
- Professional Services – Law Related
- State of Wisconsin Directories



Continued on next page



WisBar: Your One-Stop Research Shop

Have legal research to do, but aren't sure where to start? Try WisBar first. It's home to a comprehensive selection of listings, directories, search engines, and other helpful research tools.

Legal Research Page

It's the ultimate legal search engine for State Bar members. Have a question? Can't find the right form? Need a citation? Type it into Legal Research to search within Fastcase, wisbar.org, and any of your Books UnBound subscriptions. Plus, find quick links to the following resources:

- Wisconsin Circuit Court access (CCAP)
- Wisconsin Circuit Court forms
- Wisconsin Circuit Court rules
- Wisconsin Court of Appeals opinions
- Wisconsin Court of Appeals forms
- Wisconsin Court of Appeals case access
- Wisconsin Supreme Court opinions and dispositional orders
- Wisconsin Supreme Court case access
- Wisconsin Administrative Code
- Wisconsin Statutes and Annotations
- Wisconsin court and agency forms
- Federal resources

To access the Legal Research page, click on "Legal Research" in the top right corner of the wisbar.org home page.

Loislaw Libraries Through Fastcase

Lower your legal research costs and save time with Loislaw, a comprehensive treatise library within the Fastcase platform. State Bar members enjoy exclusive pricing on a Loislaw subscription that includes a robust online library, free training, and 24/7 technical support.

CaseLaw Express™

Keep pace with the prior week's Supreme Court and Court of Appeals decisions with this free for members email service delivered every Monday.

Subscribe to CaseLaw Express via the *myMembership* tab under *myStateBar*.



News and Trends

The State Bar of Wisconsin is the ultimate resource for breaking news, court decision analysis, and insights on important issues for legal professionals. From our award-winning magazine to convenient newsletters, we'll keep you informed on the issues impacting your practice. Gain insights and understanding on the news and issues that affect you the most, with these timely, law focused publications, newsletters, and information resources.

*Wisconsin Lawyer*TM Magazine

Eleven issues of the State Bar's flagship magazine are included in your membership and automatically delivered to your door. Find articles full of strategies to help you improve your practice, analysis of legal trends, and tips for improving the delivery of legal services to clients. Prefer to read articles on your computer? Just visit wisbar.org for digital issues.



*WisBar InsideTrack*TM

This member only electronic publication included in your membership is emailed twice each month on the first and third Wednesdays. Discover management tips and timely insight into legislative, court, and State Bar developments. No need to subscribe – *InsideTrack* is automatically sent to all State Bar members.

Rotunda Report

Understand legislative, judicial, and administrative developments that affect the legal profession and the justice system with this newsletter — included in your membership. Subscribe today!

Subscribe to Rotunda Report via the *myMembership* tab under *myStateBar*.



Continued on next page

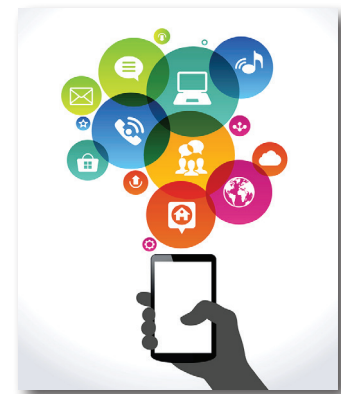
Social Media

Follow us on Facebook, Twitter, LinkedIn, YouTube, and Google+.

3 Reasons to Join Us on Social Media:

1. **Connect:** Get to know fellow Bar members, Bar staff, and others in the legal industry.
2. **Converse:** Weigh in on current events, share a story, or talk about a trend.
3. **Consider:** Get the latest legal news, discover upcoming CLE, and learn about leadership opportunities.

Visit wisbar.org → **News & Publications** → **Social Media** for a complete listing of our social media accounts.



RSS Feeds

Always be “in the know” with the latest content from WisBar and the State Bar’s key news publications by subscribing to our RSS feeds. You can choose from the following feeds:

- All State Bar News
- WisBar News
- Press Releases
- *Wisconsin Lawyer*™ magazine
- *WisBar InsideTrack*™
- *Rotunda Report*
- Classifieds – Career Opportunities
- Classifieds – Business Opportunities
- Classifieds – For Sale or Rent
- To subscribe, click on the RSS symbol at the bottom of the WisBar home page.

Practice Management

A successful practice takes more than a mastery of law and the legal system; it also requires masterful management. We are proud to offer a variety of resources that will help you create, improve, and maintain an efficient office and a profitable practice.

Practice411 - Law Office Management Assistance Program



If you're looking for guidance on managing the business aspects of your law practice, we've got the 411 – the Practice411™, that is. This free State Bar program is here to help you make smart choices about everything relating to the day-to-day operations of your practice with individualized assistance on topics such as:

- Financial planning
- Business development
- Setting up a law firm
- Personnel
- Facilities
- Marketing
- Operations management
- Technology and software

Whether you work in the public, private, or nonprofit sectors, Practice411 can help improve your office's effectiveness and your quality of life. Visit wisbar.org/practice411 for more information.

Ethical Dilemma?



(800) 254-9154

Ethics Hotline

Facing an ethical conundrum? As a State Bar member, you have access to confidential, informal guidance and assistance in resolving questions regarding Wisconsin's Rules of Professional Conduct for Attorneys. Call our free Ethics Hotline at (800) 254-9154 or visit wisbar.org/ethics to contact an experienced ethics lawyer during regular business hours.

Lawyer Referral and Information Service

Build your client base with high-quality, prescreened referrals from our Lawyer Referral and Information Service. Each year, LRIS referral specialists field nearly 40,000 contacts from Wisconsin citizens. When you join LRIS, you choose the areas of practice and geographic locations in which you'd like to receive client referrals. It's a great way to grow your business into new practice areas and geographies.

Law Office Videos

Build an effective client training program with Law Office Videos. From depositions to courtroom proceedings, Law Office Videos provide realistic, understandable client training using DVDs and accompanying workbooks. Developed by lawyers for lawyers, they offer the kinds of proven insights you can only get from other legal professionals. Law Office Videos also offers staff training videos to help you polish the professionalism of your office employees.



Wisconsin Lawyer Directory

This annual print directory is one of your best connections to other Wisconsin lawyers, judges, court personnel (including federal, state and tribal court offices). Available only to those who order it; discounted pricing for members.



Consumer Pamphlets, Handbooks, and Guides

Written by lawyers, the Consumer Pamphlets Series and Consumer Handbooks address common legal issues while highlighting your firm as THE source to turn to for legal assistance. Consumer pamphlets and handbooks cover a wide variety of legal topics in both digital and print formats. From bankruptcy to personal injury, you can select topics that emphasize your firm's expertise and spotlight key practice areas. They make great leave behinds, content for your

website, and talking points when working with new clients.

Wisconsin Lawyer Magazine Advertising

Keep your colleagues informed of changes in your practice. State Bar members receive substantial discounts on announcement ads. Also, use the *Wisconsin Lawyer*™ to let colleagues know that you are available for referrals or to serve as co-counsel. Visit wisbar.org/mediakit for all available options and more details.

WisBar Classifieds

No need to wait for print deadlines ... now you can receive immediate response to your ad with WisBar's online classifieds, which average nearly 59,000 visits per month. It's easy, fast, secure, and State Bar members receive substantial discounts. wisbar.org/classified

Place an ad for the same position, product, or service in the next issue of the *Wisconsin Lawyer*™ Magazine and receive 50% off the print ad.

Lawyer-to-Lawyer Directory

Take advantage of the *Lawyer-to-Lawyer Directory* listing approximately 400 lawyers willing to share their knowledge with other lawyers in various areas of practice through brief phone conversations. Available online.

Find more practice management tools in the discounted services section.

WisBar.org® – your portal to the State Bar and your member benefits

With more than 80,000 pages of content and instant access to legal news, CLE courses, research books, national databanks of decisions, a lawyer directory, and more, WisBar is your source for law-related resources. Make **wisbar.org** your first stop for online information, resources, and answers.

What can you do on wisbar.org?

Harness the full value of membership by logging in to WisBar. Logging in grants you access to your personalized portal – *myStateBar* – as well as comprehensive members only content that is part of your exclusive membership benefits.

- Review analysis of the latest court decisions
- Sign up for CLE and track your CLE credits
- Buy books to build your legal library
- Find tools to market your practice
- Register for conferences and institutes
- Sign up for enewsletters
- Find fellow lawyers with Lawyer Search
- Join a division or section, or request to serve on a committee
- And much more!



How to Log In

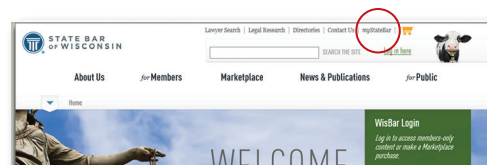
Go to **wisbar.org**

- In the green “WisBar Login” box, click “Login”
- The login form requires an email address or member number, and a password. If you were a State Bar of Wisconsin Law Student Associate, you can log in using those credentials.

Make the Most of Your Membership with *myStateBar* page

How to Access *myStateBar*

- Login to **wisbar.org**
- In the upper right-hand corner of the home page, click on *myStateBar*



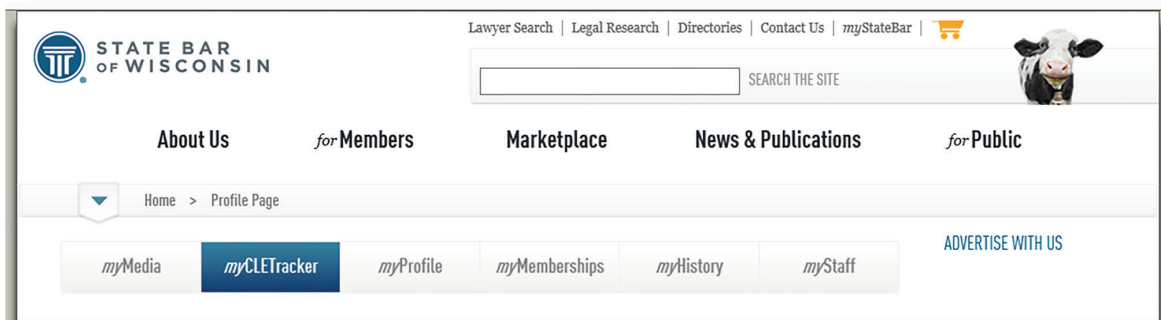
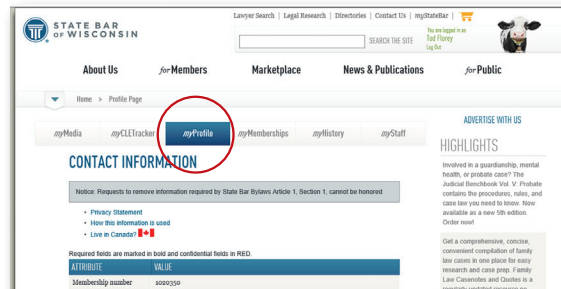
Continued on next page

myStateBar Features:

myProfile

Tell us a little about yourself. This section helps the State Bar maintain accurate information about members. Plus, your profile information is what people see when they search for you using WisBar’s Lawyer Search feature – so always keep your profile page current. Your *myProfile* page includes sections for:

- Personal and business contact information
- Alternate names
- Areas of practice and focus areas
- Changing your password
- Degrees and memberships
- Short bio
- Social media and blog URLs
- Adding a profile picture



myCLETracker

With *myCLETracker*, it’s easy to view your approved and pending CLE credits earned from the State Bar of Wisconsin. You can also enter credits from other providers. Note: *myCLETracker* is not a reporting mechanism – you’ll still need to report your CLE credits to the BBE.

View CLE Report

STATE BAR SPONSORED CLE						
DATE	TITLE	PARTICIPANT TYPE	LOCATION	CLE	EPR	EDIT
5/16/2014	10th Annual Commercial Real Estate (11/14/13) On Demand CLE	Attendee	Online	3.5	0.0	EDIT
7/1/2014	WisPACT Update 2013 (05/8/13) - On Demand CLE	Attendee	Online	8.0	0.0	EDIT
7/1/2014	WisPACT Update 2014 (5/8/14) On Demand CLE	Attendee	Online	8.0	0.0	EDIT
7/22/2015	Shelter From the Storm: Domestic Abuse & Family Law 5/16/14 CLE	Attendee	Online	8.0	0.0	EDIT
10/20/2015	Car Crash Symposium (12/18/15) On Demand CLE	Attendee	Online	7.0	0.0	EDIT
10/20/2015	2015 Annual Bankruptcy Update Eastern District 11/20/15 CLE	Attendee	Online	8.0	0.0	EDIT
10/20/2015	Beyond Padilla v. Kentucky: The Immigration Conseq (9/10/15) CLE	Attendee	Online	8.0	0.0	EDIT
10/20/2015	2015 Annual Bankruptcy Update Western District 11/19/15 CLE	Attendee	Online	8.0	0.0	EDIT
10/20/2015	Nevermore: Employment Law and the Ray Rice Case 12/16/14 CLE	Attendee	Online	8.0	0.0	EDIT
10/20/2015	26th Annual Institute of Trial Practice (11/5/15) On Demand CLE	Attendee	Online	1.0	0.0	EDIT
10/20/2015	25th Annual Institute of Trial Practice (11/6/14) On Demand CLE	Attendee	Online	9.5	0.0	EDIT
10/20/2015	25th Annual Institute of Trial Practice (11/6/14) On Demand CLE	Attendee	Online	9.5	0.0	EDIT

myMemberships

View your membership in State Bar divisions, sections, and committees. Manage your e-list subscriptions and preferences. Plus, sign up to receive e-newsletters.

myMedia

Download or access electronic products, including:

- CLE webcasts and PINNACLE CLE OnDemand seminars
- CLE course materials
- PINNACLE Books UnBound® titles
- PINNACLE forms

myHistory

Keep track of your State Bar activities, including:

- Meeting attendance
- Product orders placed

You can also access articles you've saved on WisBar here.

myStaff

Much of the content you'll find on WisBar is only accessible to State Bar members. But what if your paralegal or legal assistant needs access, too? Use this section to grant or revoke access to WisBar content for your support staff.

myDues – New!

Renew your State Bar Dues, pay your Supreme Court Assessment, and complete your Trust Account Certificate through our convenient online portal. Initial admission payments must be submitted by mail; annual renewals can be processed through the State Bar Dues online payment system.



Lawyer Assistance Program – Learn to Live Well

Don't let your success come at a personal price. Whether you're just starting out or are already established, we're here to help you live a better life while you practice and beyond. State Bar members have access to assistance designed just for lawyers to help you address potential issues before they adversely affect the quality of your life and career.

Wisconsin Lawyers Assistance Program (WisLAP)

WisLAP is designed to help lawyers, judges, law students, and their families build on their strengths and to provide support by offering services that promote physical, mental, and emotional health. It is based upon lawyers helping other lawyers.

The program provides free, confidential assistance in improving or maintaining health and well-being whether coping with substance abuse or dependence, mental health challenges, or other stressors, which negatively affect the quality of life and/or the practice of law.

Starting out in the practice of law can be as challenging as it is exciting. Don't hesitate to call for a free consultation. It's the smart thing to do. Give them a call at (800) 543-2625.



Legal Communities

Get involved with your State Bar and gain valuable skills, peer recognition, and experience while influencing the direction of the legal profession in Wisconsin.

Connect with fellow members in your practice areas through State Bar sections and divisions. Build relationships with, and learn from, others who share your interests in various legal niches.

State Bar Sections

The State Bar offers 24 sections focusing on specific professional areas or legal issues. Section membership is free for first-year attorneys and includes access to newsletters, e-lists, and other useful resources. Section members work together on issues that matter to them and the public they serve. It's a great way to find and get to know other lawyers who share your interests.

- Administrative & Local Government Law
- Alternative Dispute Resolution*
- Appellate Practice
- Bankruptcy, Insolvency & Creditors' Rights*
- Business Law*
- Children and the Law*
- Civil Rights & Liberties*
- Construction & Public Contract Law*
- Criminal Law*
- Elder Law*
- Energy & Telecommunications Law
- Environmental Law
- Family Law*
- Health Law*
- Indian Law*
- Intellectual Property Law
- International Practice
- Labor & Employment Law
- Litigation*
- Public Interest Law*
- Real Property, Probate & Trust Law*
- Solo/Small Firm & General Practice
- Sports & Entertainment Law
- Taxation*

* indicates sections that lobby the legislature

State Bar Divisions

Meet other attorneys who share important characteristics with you in the State Bar's four divisions organized under broad categories that reflect the location, practice setting, or experience of State Bar members.

Young Lawyers Division

If you are under age 36 or in your first five years of practice following State Bar admission, you are automatically a member of this exciting division! The Young Lawyers Division (YLD) provides educational training and networking opportunities and equips you to contribute to the community, local bar associations, and the State Bar. Benefits and activities include:

- Legal education seminars
- Career assistance
- Public service projects
- Networking opportunities
- Addressing new lawyer issues
- Young Lawyers Conference

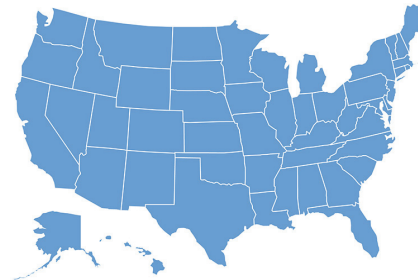
Government Lawyers Division

The Government Lawyers Division (GLD) is open to any voting member of the State Bar receiving a salary from a government unit. It promotes, enriches, and supports the professional needs, interests, and expertise of public sector attorneys. GLD members can enjoy:

- Professional growth through special CLE courses
- Support from the quarterly member newsletter, email list, and other resources
- Opportunities for involvement in committees, specialty councils, and special events

Nonresident Lawyers Division

The Nonresident Lawyers Division (NRLD) helps nonresident members maintain their ties with Wisconsin. Members practicing outside of Wisconsin automatically belong to this complimentary group and join a growing number of NRLD chapters across the country. The NRLD promotes communication, networking, and business opportunities among nonresident State Bar members. It also gives nonresident members the chance to participate in the State Bar's governance and policy development. Benefits are available to both active and inactive members.



Senior Lawyers Division

The Senior Lawyers Division (SLD) offers activities and content specifically designed for the needs and interests of senior lawyers. This division also provides opportunities for senior lawyers to stay connected with the State Bar as well as opportunities to assist young lawyers. All State Bar members 60 years or older are eligible for SLD membership.

Leadership Opportunities

With leadership comes responsibility — along with a wealth of opportunities and benefits. By getting involved, you'll gain valuable skills, peer recognition, and experience while influencing the direction of the profession in Wisconsin.

Whether you're looking to make new friends and contacts, learn new skills, or pursue a passion, volunteering within the State Bar of Wisconsin can help you fulfill personal and professional goals. To learn more and get involved, visit wisbar.org → *forMembers* → **Leadership**.



Lead the Way - Volunteer Today!

Discover what opportunities are available to you in our comprehensive, easy-to-use leadership opportunities electronic directory at wisbar.org/getinvolved.

Board of Governors

The Board of Governors (BOG) manages and directs the affairs and activities of the State Bar of Wisconsin. The BOG and its officers play major roles in influencing the future of Wisconsin's legal profession. Play your own part by running for a two-year term.

Governors work to help the State Bar ensure that Wisconsin attorneys meet and maintain the highest standards of competency, technical skill, and ethical conduct. They also contribute to ensuring Wisconsin citizens have equal access to legal services of the highest quality, and to a system that affords prompt and fair resolution.

Committees

The State Bar depends on you to make it an effective organization. Committee service is a great way to get involved. We have more than 25 standing and special committees dedicated to a variety of key issues. From leadership development to legal assistance, you're bound to find a committee that piques your interests. Fill out a Committee Volunteer Interest Form at wisbar.org/committees to get involved.

Local and Specialty Bar Opportunities

Looking to get involved at the local level? Check out the list of local, regional, and specialty bar associations the State Bar supports at wisbar.org/bars.

By working together on special projects, newsletters, programs, and other initiatives, these partnerships strengthen the legal profession as a whole.

Public Service Opportunities

The number of practicing lawyers in Wisconsin is considerable – but the need for accessible and affordable legal services is even greater. If you're interested in giving back to the profession or your community, our public service programs and services offer many exciting and valuable options to explore.

Public Education Programs

Our Courts Wisconsin

The Our Courts Wisconsin program offers nonpartisan informational programs about the legal system to adult audiences throughout Wisconsin. Specially-trained legal professionals make presentations free of charge to community groups. Consider volunteering as an Our Courts Wisconsin presenter in your community. It's a great way to increase your presence and educate your community. Visit wisbar.org/ourcourts for more information.



Credit Abuse Resistance Education (CARE)

Calling all bankruptcy attorneys! The CARE program educates students and adults on the responsible use of credit and other fundamentals of financial literacy. Volunteer bankruptcy attorneys are needed to give prepared 40-60 minute CARE presentations to high schools, colleges, and community groups. Help teach the public the importance of consumer credit responsibility and the consequences of unwise credit use. Learn more at wisbar.org/CARE.

Wisconsin High School Mock Trial Program

Since its creation in 1983, the Wisconsin High School Mock Trial Program has brought our legal system to life for thousands of students. Using facts and case materials developed by Wisconsin attorneys, students gain a deeper understanding of the court system as they develop their arguments and build their cases.



Every year, dozens of judges and attorneys are needed to judge mock trials as part of the Wisconsin High School Mock Trial Tournament. Visit wisbar.org/mocktrial to learn how you can get involved.

Pro Bono



For too many Wisconsin residents, equal justice under the law is out of reach because they cannot afford the professional legal help they need. Wisconsin lawyers are uniquely qualified to help close this justice gap by offering their services pro bono.

Pro bono service strengthens your existing skills, exposes you to new areas of law, and helps you network with other professionals. The State Bar supports members who do pro bono work with:

- Pro Bono Initiative grants to develop or expand pro bono legal assistance projects
- Free liability insurance
- Expense reimbursement

Continued on next page

Modest Means Referral Service

State Bar members who volunteer to join the Modest Means Panel agree to provide services at reduced cost to moderate income clients who have been screened by our Lawyer Referral and Information Service (LRIS). By accepting reduced fees, you can help ensure there is legal assistance available to people who need alternative payment options.

Lawyer Hotline

Can you spare two hours? Volunteer to answer basic legal questions as part of the Lawyer Hotline. The Lawyer Hotline is an option for people who have simple questions about a legal issue having to do with landlord-tenant law, small claims court, wills, and similar issues. Callers receive a scheduled time when a Hotline volunteer will call them back to discuss their question. Volunteers then meet at the State Bar Center or other locations around the state, for two hours to return calls.



Fee Arbitration

Fee disagreements with clients can be stressful, time-consuming, and costly. The State Bar's Fee Arbitration Program gives you the option to resolve fee conflicts in a private hearing before a panel of trained arbitrators. Preserve your privacy, avoid undue publicity, and save time and money with the confidential, low-cost Fee Arbitration Program.

Government Advocacy Programs

Law isn't just shaped in the courtroom — the halls of government and the arena of public opinion frequently influence the law, too. Your State Bar is constantly working to advance the practice of law in all three areas.

Government Relations

As the lobbying arm of the State Bar and some of its practice sections, the Government Relations (GR) program tracks Supreme Court Rules and fosters effective communication and relations with the judicial branch. The GR program works with State Bar members and state government officials (including legislators, executive branch and judicial branch agencies, and their staff) to improve the administration of justice and the delivery of legal services in Wisconsin. In addition, the GR program provides updates about what's happening inside the Capitol dome through its monthly newsletter, Rotunda Report. It also offers resources on WisBar at wisbar.org/govrelations.

Public Relations

Public Relations supports programming and activities that improve public understanding of the legal system and promotes accurate coverage of State Bar activities and the justice system.

Rotunda Report

Understand legislative, judicial, and administrative developments that affect the legal profession and the justice system with this newsletter — included in your membership. Subscribe to Rotunda Report via the *myMembership* tab under *myStateBar*.

Discount Programs

In addition to the many resources that are included or discounted with your State Bar membership, we are pleased to provide you with quality affiliated programs that will help save you money and benefit your practice. To find more information on the products and programs available, visit wisbar.org/memben.

Practice management

Clio

Think of it as your online office manager. Clio is a comprehensive, easy-to-use, cloud-based law practice management software. From intake to invoice, find the tools you need to manage cases, clients, documents, bills, appointments, time-tracking, reporting, and accounting. State Bar members enjoy a 10% lifetime discount on Clio plus unlimited access to live customer support and training.



LawPay

LawPay Electronic Billing Service lets you securely accept credit card payments online via your website or by email. Compliant with all ABA and state client fund management requirements, LawPay automatically separates payments into your trust and operating accounts. Streamline your collections process and increase your cash flow with LawPay. State Bar members save up to 25% off credit card processing fees when they purchase this helpful service.

iStream

Deposit checks and money orders electronically with iStream Remote Deposit Capture. iStream's easy-to-use software makes payment processing more efficient and catches errors on checks before they are deposited.



mycase



Manage cases with ease using MyCase practice management software. MyCase lets you work anywhere, from any device. Keep your clients informed with a secure portal. Accept online payments, track time, and even generate firm reports. As a State Bar member, you get a 30-

day free trial plus a 10% lifetime discount on MyCase.

ABA Books Discount – Save 15% on ABA Publications

Looking for a great way to augment your Wisconsin law resource library? Choose from hundreds of ABA titles (no ABA membership required). To take advantage of these savings, enter **PAB8EWIB** in the “Discount Code Number” field when placing your order on the ABA Web site.

Loislaw Libraries on Fastcase

Lower your legal research costs and save time with Loislaw, a comprehensive treatise library within the Fastcase platform. State Bar members enjoy exclusive pricing on a Loislaw subscription that includes a robust online library, free training, and 24/7 technical support.

UPS® Shipping Discount

Improve your bottom line with competitive rates on UPS® shipping services. Save up to 34%* on a variety of shipping services including air, international, ground and freight services. Plus, get 50%* off UPS Next Day Air®, UPS Next Day Air Saver®, UPS Worldwide Express® export, UPS Worldwide Saver® export, and UPS Worldwide Expedited® export shipments for up to four weeks after you enroll. You can receive these discounts even if you already have a UPS account. To enroll and start saving, visit [save with ups.com/wisbar](http://save.with.ups.com/wisbar).



Professional Liability Insurance

You can obtain high-quality professional liability coverage through the Wisconsin Lawyers Mutual Insurance Company (WILMIC), formed with the assistance of the State Bar. Call (800) 373-3839 or visit www.wilmic.com.

State Bar Center Meeting Facilities

Included with your membership during normal business hours. Call (800) 444-9404, ext. 6099 for details or to check availability.

Office Depot Partner Advantage™ Program

State Bar members get special pricing at all Office Depot locations and online. Save big on all kinds of supplies for your law office, including:

- Digital print services
- Paper
- Furniture
- Technology
- More than 25,000 office products



Discounted *Wisconsin Lawyer*™ advertising

Keep your colleagues informed of changes in your practice. State Bar members receive substantial discounts on announcement ads. Also, use the *Wisconsin Lawyer* magazine to let your colleagues know that you are available for referrals or to serve as co-counsel.

Mailing Lists and Labels

Purchase mailing lists and labels to help you market a product or a service that ties into the professional or community interests of State Bar members.

PINNACLE Productions

The team behind State Bar of Wisconsin PINNACLE's webcasts and videos are available to help make you and your business shine. PINNACLE Productions can create corporate and private webcasts, staff training videos, welcome videos for websites, and infomercials. Plus, members get a discounted rate.

Insurance Programs

Professional Liability Insurance

Protect your firm from malpractice claims with professional liability insurance through Wisconsin Lawyers Mutual Insurance Company (WILMIC). Created by lawyers, for lawyers, WILMIC has been providing the services Wisconsin lawyers need for more than 30 years. Discover the reassurance that comes from professional liability insurance with superior claims administration.



Wisconsin Lawyers Mutual
INSURANCE COMPANY



You can obtain high-quality professional liability coverage through the Wisconsin Lawyers Mutual Insurance Company (WILMIC), formed with the assistance of the State Bar. Call (800) 373-3839 or visit www.wilmic.com.

Dental Insurance

Keep on smiling with special member savings on dental insurance plans through Delta Dental of Wisconsin. Whether you choose the nation's largest dental network as part of the Premier Plan or the low fees of the PPO Plan, all Delta Dental insurance plans offer appealing benefits, including:



- Attractive rates
- CheckUp Plus benefit that excludes benefits paid for diagnostic and preventive care from the individual annual benefit maximum for the plan
- Orthodontic benefits to dependents up to age 18
- Option for dependents to stay on the plan until age 26.

Vision Plan



State Bar of Wisconsin members enjoy big savings on vision benefits through the EyeMed Vision Plan. Two different plans offer varying rate and co-pay levels so you can choose the right option for your budget. You'll get access to the biggest nationwide network of vision specialists at an economical price through EyeMed Vision.

Health Insurance

The State Bar is aware that finding health insurance in this new environment can be complicated. To help our members navigate this new system we have partnered with two trusted insurance representatives who can help you to find a policy that will work best for you (and your employees).

All State Bar members are encouraged to utilize one of the resources below, or to connect with your own trusted insurance advisor to help make the best coverage decisions for your unique situation.

Professional Insurance Programs (PIP)

PIP provides personal assistance on health insurance options and a shopping portal for State Bar members to help them evaluate other coverage options through WPS and Arise Health Plan that may be beneficial. PIP can be contacted at (414) 277-0154 or 1-800-637-4676 or via website at www.insuranceformembers.com.



Professional Insurance Programs

Continued on next page

Bultman Financial Services (BFS)

Bultman Financial Services (BFS) Bultman Financial Services will be offering personal assistance in evaluating coverage options and access to an online health insurance shopping portal for State Bar members. This shopping portal will provide access to coverage options both for carriers in Wisconsin and across the nation. BFS can be contacted at (262)782-9949 or 1-800-344-7040 or via their website at www.bultmanfinancial.com.



Auto & Home

As a State Bar member, you may be eligible to participate in West Bend's Association Plus® program. The program packages a variety of personal insurance coverages with special features and discounts.

At the foundation of the program is the popular Home and Highway® coverage. Home and Highway offers many unique features including the Premium Value Award® Five percent of your annual premium will be returned to you in cash as you Premium Value Award each year you don't have a claim!



As a State Bar member, you'll also receive an immediate group discount when you enroll, and when your policy renews. Each participant also will be eligible for further discounts based on the driving habits and loss experiences of participating members of your group. And you'll have the option of several convenient payment plans, including Electronic funds transfer and online payments.

For more information about Association Plus, call the independent insurance agency in your area that represents West Bend. For a list of agents in your area, visit www.thesilverlining.com.

Group Term Life Insurance Plan

The State Bar of Wisconsin Group Term Life Insurance Plan—with coverage issued by *The Prudential Insurance Company of America (Prudential)*—was designed for a simple purpose: to provide money to help keep your family's hopes and dreams for the future on track following an untimely death. All association members under the age of 65 are eligible to apply for the Term Life Insurance Plan. Term Life Insurance is available to you in amounts up to \$1,000,000 in \$50,000 increments. Covered members may also apply to insure their spouses under age 65. Spouse coverage may not exceed 100% of the member's coverage amount. Eligible dependent children under age 26 can be insured for \$10,000 or \$20,000 per child. All coverage is subject to Prudential's approval of satisfactory evidence of insurability.

Long-Term Care

Long-term care insurance (LTCI) helps to offset the cost of a broad range of services needed by people, for extended periods of time, due to a chronic illness or disability. These costs vary depending on the services needed and can quickly deplete an estate. Because the State Bar of Wisconsin is endorsing the LTCI plans of select insurance companies, these companies are offering a discount. In addition to members and their spouses, this discount is being made available to parents of members and their spouses. Employees of law firms and their spouses are also eligible for this discount. When a person applies for long-term care insurance, questions relating to his or her health status will be asked. Each insurance company has its own underwriting criteria. You can download a form in order to receive an illustration, call us at (262) 782-9949 or (800) 344-7040 or visit www.bultmanfinancial.com.

Long-Term Disability

If you are injured or sick and cannot work, will you be financially protected? You can be with the State Bar of Wisconsin endorsed Long-Term Disability (LTD) Insurance, a product of Anthem Life Insurance Company. The State Bar of Wisconsin's LTD plan is administered by Bultman Financial Services, which also administers the endorsed life insurance plan. This flexible plan offers the advantages of individual disability insurance at group coverage prices, which are especially important for solo- and small-firm practitioners. The plan also allows members to supplement coverage offered by their employers. It is "portable," so you can retain the coverage when you change jobs, even if you stop practicing law and switch to another white-collar profession (if you maintain your State Bar of Wisconsin membership). Find out more at www.bultmanfinancial.com.

Group Accidental Death and Dismemberment

This is worldwide, 24-hour protection that pays in addition to any other insurance. This group coverage is available to you as a member of State Bar of Wisconsin as well as your employees. Administrative costs for group coverage are low, so you can save in premium costs and enjoy the benefits of the plan. For more information on the SBW Group Accidental Death & Dismemberment Plan call (262) 782-9949, or fax (262) 782-1454 or visit www.bultmanfinancial.com.

Property and Casualty for Firms

Johnson Insurance is offering a comprehensive insurance program as part of the Member Benefit Program of the State Bar of Wisconsin. As a State Bar member your law firm has access to property and casualty insurance, as well as auto and worker's compensation programs tailored to meet your firm's needs. The practice of law is highly specialized and constantly evolving. They've made it their business to understand your complex needs. When you work with Johnson Insurance you can take comfort in knowing their experts are committed to your firm's protection and best interests. For more information about Johnson Insurance and how they can protect your law firm call 608-203-3932 or visit www.johnsonins.com



Retirement and Financial Planning

● ● ● ● ABA

● ● ● ● Retirement

● ● ● ● Funds™

● ● ● ●

401(k) Retirement Savings

Solo or small firm practitioners can have difficulty finding retirement plans with no out-of-pocket expenses, professional fiduciary services, a broad range of investment options, and full-service administration. 401(k) plans through ABA Retirement Funds offer all that and more. Whether you're interested in an individual plan or need an overall plan for your entire firm, ABA Retirement Funds specializes in creating and managing unique 401(k) plans to fit your needs.

IRA Plans

Thanks to a special arrangement with Bultman Financial Services, State Bar members and their employees can take advantage of a smart retirement savings option. Contribute to an IRA and use those contributions to purchase Class N shares of various Oppenheimer Funds without the usual front-end sales charges.



Travel and Vacation Discounts

Car Rentals

Put the pedal to the metal. Get special discounts on car rentals through Avis, Budget, and Hertz. But these discounts aren't just for business rentals – use them for personal rentals, too!



Travel Programs and Planning

Go Next offers specially priced escorted trips for State Bar members, their families and friends. Annual programs include trips to the Mediterranean and Greek Isles, Europe, Scandinavia, Asia, South Pacific, North America, Caribbean & Panama Canal, Israel & Egypt, and South America.

Prescription Drug Discounts

Enjoy special negotiated pricing on prescription drugs at Wal-Mart, Sam's Club, or Neighborhood Market pharmacies. See details at wisbar.org/discounts

Wisconsin Law Foundation

As the State Bar's charitable arm, the Wisconsin Law Foundation promotes public understanding of the law. It also works to improve the administration of justice and other law-related public services by funding innovative and creative programs that improve the vision of the American justice system, including:

- G. Lane Ware Leadership Academy
- Greater Wisconsin Initiative Bus Tour
- Diversity Fund
- Wisconsin High School Mock Trial Program
- Young Lawyers Leadership Summit

None of this is possible without contributions from State Bar members like you. To learn more and donate go to wisbar.org/wlf.



**WISCONSIN
LAW FOUNDATION**

Charitable Arm of the State Bar of Wisconsin

Your Practice. Our Purpose.

Below is a quick reference list of telephone numbers and web addresses to access your benefits quickly and easily. For a full listing of your membership benefits, visit wisbar.org/member or call (800) 728-7788.

PINNACLE® Books and Online Forms Bank

wisbar.org/books

PINNACLE® Seminars

wisbar.org/seminars

Member Discount Programs

wisbar.org/discounts

Ethics Hotline

(800) 254-9154 or (608) 229-2017

wisbar.org/ethics

FASTCASE®

wisbar.org/fastcase

Fee Arbitration

(800) 444-9404, ext. 6185

wisbar.org/committee/rfd

Government Relations

(800) 444-9404, ext. 6128

wisbar.org/govrelations

WisBar InsideTrack™

(800) 444-9404, ext. 6135

wisbar.org/insidetrack

Law-Related Education

(800) 444-9404, ext. 6191

wisbar.org/lre

Lawyer Referral and Information Service (LRIS)

(800) 444-9404, ext. 6131

wisbar.org/lris

Modest Means Panel

(800) 444-9404, ext. 6131

wisbar.org/modestmeans

Practice411™ (Law Office Management)

(800) 444-9404, ext. 6012

wisbar.org/practice411

Pro Bono

(800) 444-9404, ext. 6177

wisbar.org/probono

Public and Media Relations

(800) 444-9404, ext. 6025

Sections

(800) 444-9404, ext. 6190

wisbar.org/sections

Volunteer Opportunities

wisbar.org/getinvolved

Wisconsin Law Foundation

(800) 444-9404, ext. 6171

wisbar.org/bar/wlf

Wisconsin Lawyer™ Magazine

(800) 444-9404, ext. 6127

wisbar.org/wislawmag

Wisconsin Lawyers Assistance Program (Wislap)

(800) 543-2625

wisbar.org/wislap

WE'RE HERE TO HELP YOU AND YOUR PRACTICE

Contact Us

Phone

(800) 728-7788

Website

wisbar.org

Email

memberbenefits@wisbar.org

service@wisbar.org

Mailing Address

P.O. Box 7158
Madison, WI 53707

Street Address

5302 Eastpark Blvd.
Madison, WI 53718



MKT459 6/17

STATE BAR OF WISCONSIN

Your Practice. Our Purpose.®